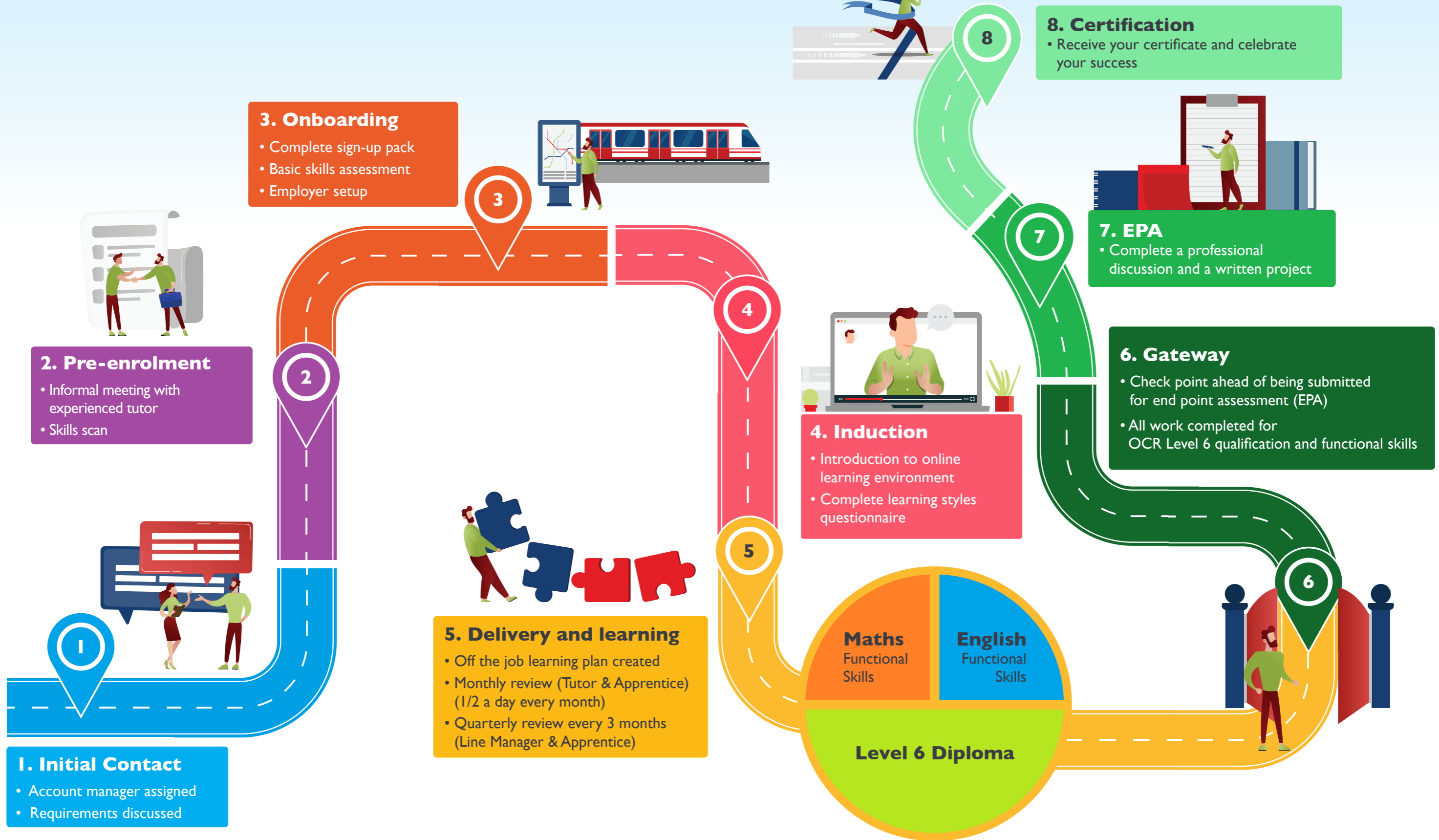




# The Apprenticeship Journey...



# What you can expect from your Apprenticeship

**Thank you for considering Call of the Wild to complete your Apprenticeship.**

## INITIAL CONTACT

You'll be assigned an account manager who will discuss your initial enquiry and assess your requirements with you. This can include queries regarding entry requirements, duration and fees. We'll also run through the apprenticeship programme with you, so you know what to expect.

## PRE-ENROLMENT

Following your introduction, you will meet with one of our experienced tutors who will help agree clear goals and inform your next steps.

This informal meeting will also give you the opportunity to discuss your role, caseload and your current skill set.

## ONBOARDING

You will complete a sign-up pack, which contains a handful of straightforward forms, and you'll also complete a basic skill assessment (BKSB) to determine your current level.

Our aim is to upskill you in all areas, but you will have the option, after completing the basic skills assessment, to use your English and Maths GCSE's as approved prior learning (APL) – providing they are grade A\*-C or equivalent – to bypass the functional skills qualifications that you must undertake to complete the apprenticeship.

## INDUCTION

As part of your learning, you will receive a full induction and a learning styles questionnaire to ensure that we give you the best tuition possible.

## DELIVERY AND LEARNING

To achieve this qualification, you must complete a total of 60 credits (48 credits made from seven mandatory units, and 12 credits made from a handful of optional units)

Each unit is made up of a variety of tasks; these can include written assignments, case studies, projects, professional discussions and a minimum of two pre-arranged observations. A witness testimony from your line manager is also required.

On average, there is one unit to complete every two months.

For every month of learning, a review will be completed with your tutor. This is a straight-forward form which will document progress and evidence of learning. This will be completed digitally during your tutoring session.

## COMPLETION IS MADE UP OF 3 STAGES

The first stage is passing through the "Gateway". This is simply a checkpoint for Call of the Wild to ensure that all work and assignments are completed, and that you are prepared and ready to move on to the second stage: End Point Assessment (EPA).

The EPA is where you put everything you've learned into practice. This will consist of evidence from your diploma, a professional discussion (90 minutes) and a written project (4000 word count).

The third and final stage is collecting your certificates – Congratulations! We will be on hand to help you decide what your next steps are and will follow up in 3 months' time to support reflective practice. "Experience + reflection = learning"

# 98% Pass Rate

For Level 6 Career Guidance & Development qualification over 9 years

Testimonial *"I have really enjoyed my learning experience with Call of the Wild. It's an excellent course, a great delivery platform and I will highly recommend it to all."*